



ArcSoft® PhotoStudio® 5.5 instantly improves your camera, scanner, printer, or other image-centric device. By combining advanced photo editing with an intuitive user interface, PhotoStudio 5.5 offers your customers everything they need to create, organize, enhance, manipulate, and print their images.

Target audience:

PhotoStudio 5.5 is the one-stop solution for business users and photo enthusiasts in need of a powerful but easy to use imaging application.

www.arcsoft.com

CUSTOMIZED FEATURES

Every ArcSoft application is fully customizable to meet the requirements set forth by your business and device. PhotoStudio 5.5 is no exception. Any feature can be altered and new features added per your request to build the best possible supplement for your products.

INTUITIVE AND FUN

PhotoStudio 5.5 groups various commands and options into separate palettes that can be displayed about the screen in an infinite number of ways. Your customers can arrange the appearance of the desktop however they want in order to maximize their space and work only with the tools that they need.

MACROS & BATCH PROCESSING

Your customers can save their own sets of commands as macros, enabling them to apply multiple effects and edits to a photo with a single click. Batch processing applies a macro to an entire set of photos all at once.

3D TITLING

The ArcSoft 3D Text Factory™ plug-in comes installed with PhotoStudio 5.5, giving your customers the ability to create customized three-dimensional titles, captions, and more. They have full control over the text style, depth, and shading. Three-dimensional text enhances any image, slide show, or presentation.

AUTO SELECTION TOOLS

The "Magnetic Lasso" tool helps your customers make selections around people and other objects by automatically "snapping" around them. The objects can then be cropped out or pasted onto other pictures.

REAL-TIME EFFECT PREVIEWING

Every effect and enhancement can be previewed in real-time. Your customers can quickly see modifications to their photos without having to wait for edits to be processed. They'll save incredible amounts of time and be able to make changes to their projects in a more effective manner.

IMAGE LAYERING

Multiple photos and text can be stacked into a single image file, with each layer capable of being edited independently from the rest. Components can be blended together to create professional-looking designs and images.

LOTS OF EFFECTS

Over 70 special effect and enhancement options are available. Your customers can adjust the intensity of each effect and apply multiple effects over and over to create truly unique digital images. And since every change is previewable in real-time, no time is wasted applying an unwanted effect.

FAST, AUTOMATIC ENHANCING

Red-eye removal is only a mouse click away. The "Auto Enhance" feature quickly applies a set of color-correcting commands to a photo to make it vivid and clear. Your customers can freely touch up their photos any way they want, but we've also included the tools that do half the work for them.

MULTI-CROPPING

PhotoStudio individually crops out single photos from an entire bed of scanned images, giving your customers more time to enjoy their pics.

SYSTEM REQUIREMENTS

Windows 98SE/Me/2000/XP • Pentium II-based processor or equivalent • 50 MB free hard disk space • 64 MB RAM (128 MB recommended) • 16-bit color display

SPACE USED ON CD

20 MB (one language)

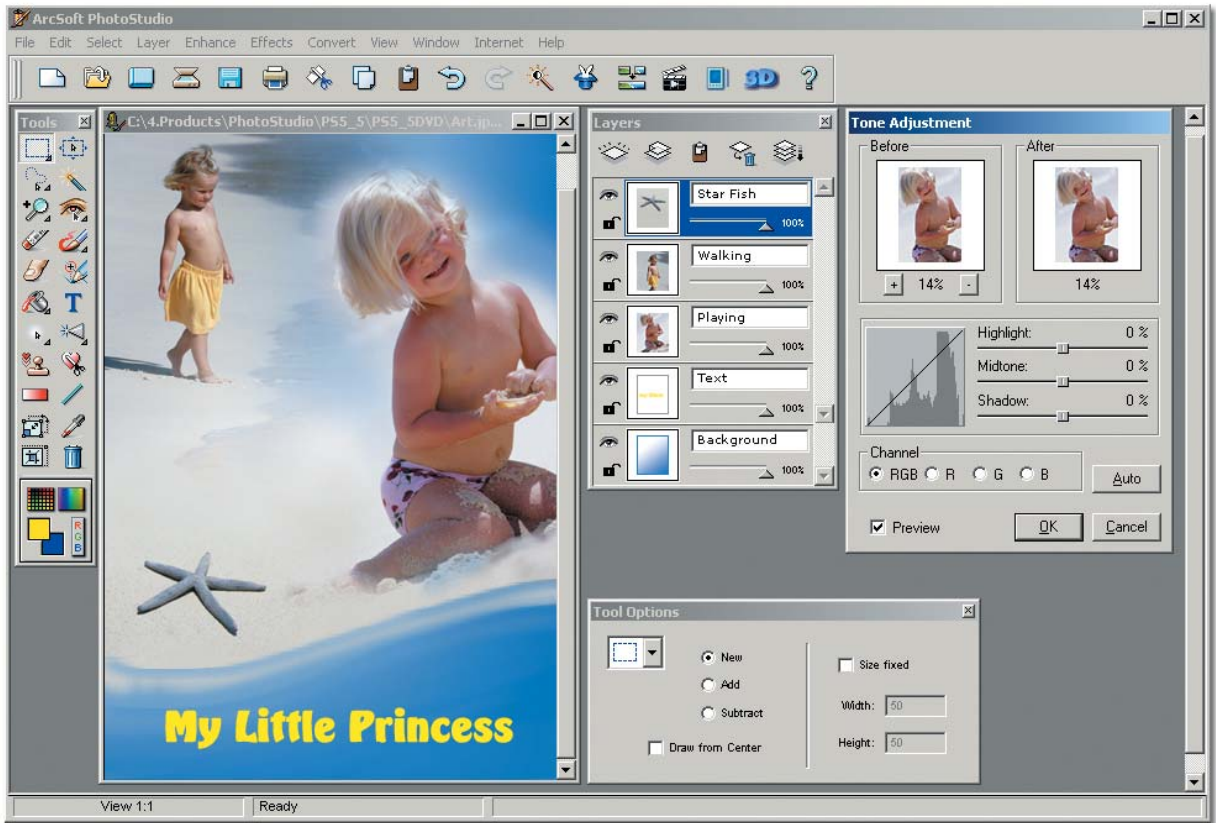
LANGUAGES

E • F • I • G • S • D • SW • BP • CS • CT • J • K

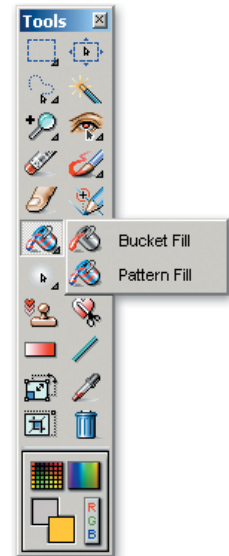
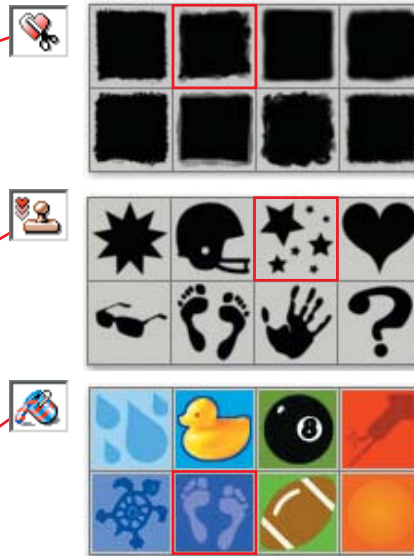
MSRP: \$79.99



ArcSoft® PhotoStudio®



Stamps and Fun Edges



Extended Tool Bar



Built-in ArcSoft 3D Text Factory

Photo Browser

